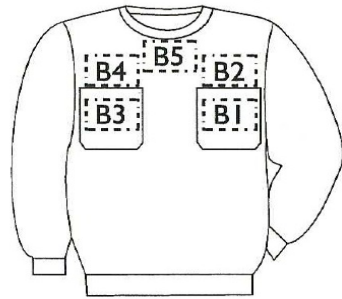


# Placering.

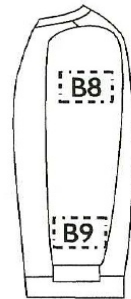
## Transfer/broderi max 100cm<sup>2</sup>.

Følgende placeringer af broderi er ikke muligt: B1, B3, B8-19

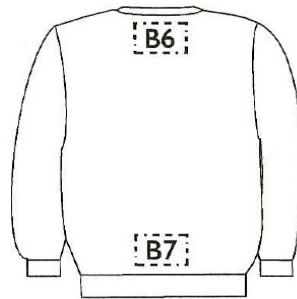
Mulighed for placering på tøjet er afhængig af størrelse på transfer/broderi.



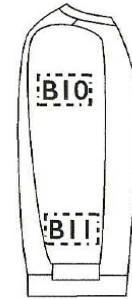
For



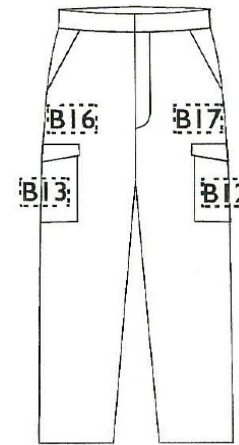
Venstre ærme



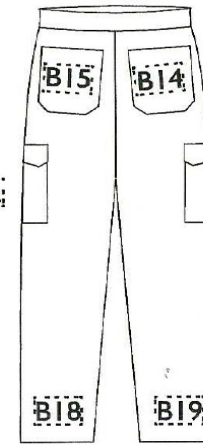
Ryg



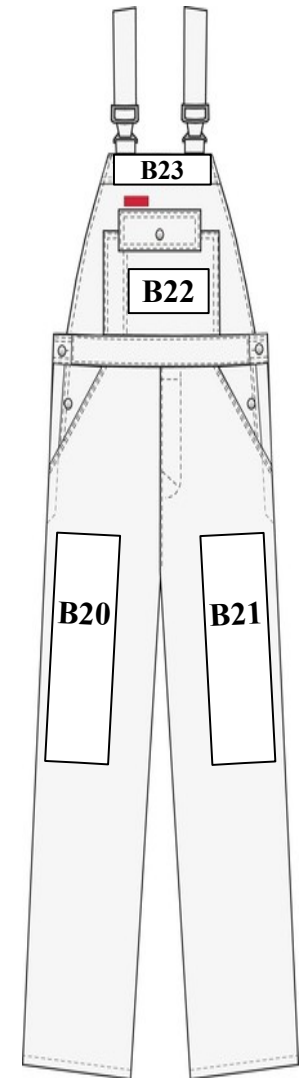
Højre ærme



For



Bag

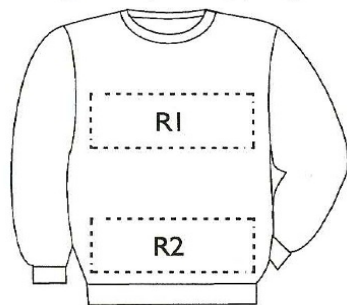


# Placering.

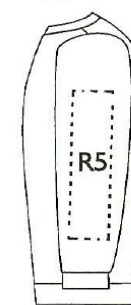
## Transfer/broderi max 500cm<sup>2</sup>.

Følgende placeringer af broderi er ikke muligt: R5-R12

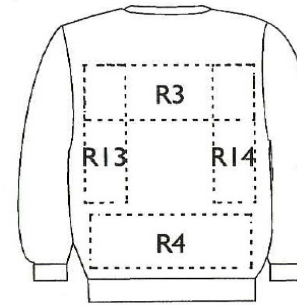
Mulighed for placering på tøjet er afhængig af størrelse på transfer/broderi



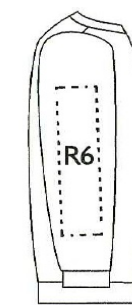
For



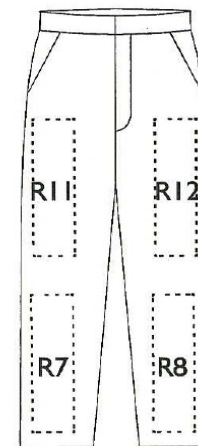
Venstre ærme



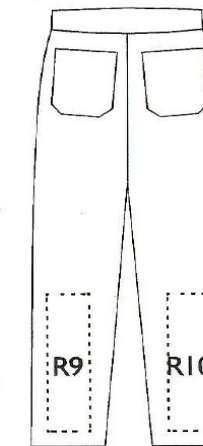
Ryg



Højre ærme



For



Bag